

APPROVAL SHEET

MODEL: ST-TR2.4G ANTENNA

DESCRIPTION: 2.4GHz ANT (i-Pex type)

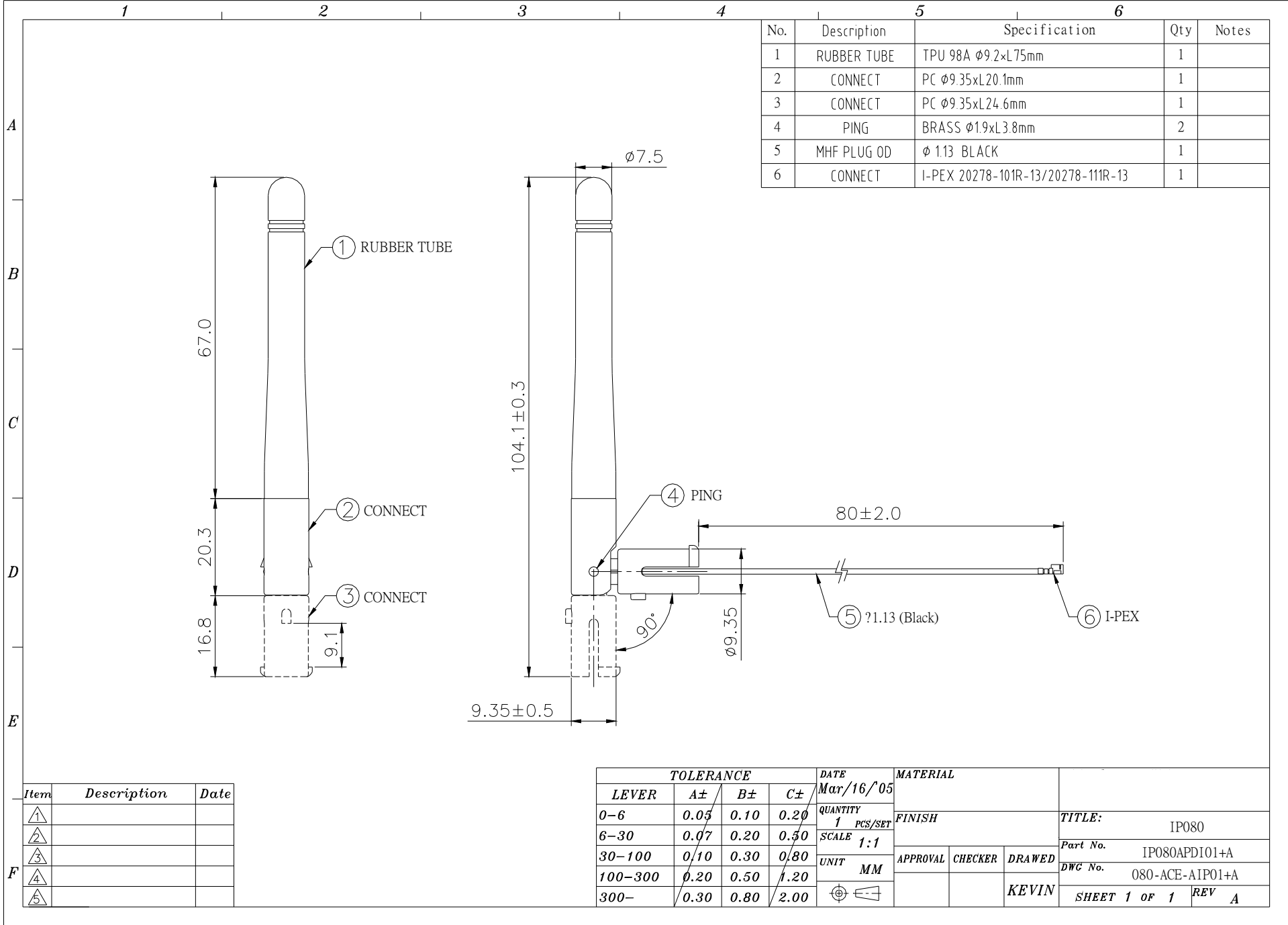
P/N: IP0801PDI01+A

CUSTOMER P/N:

DATE: 10 SEP 2007

Manager	Chief	Engineer

Check	Response



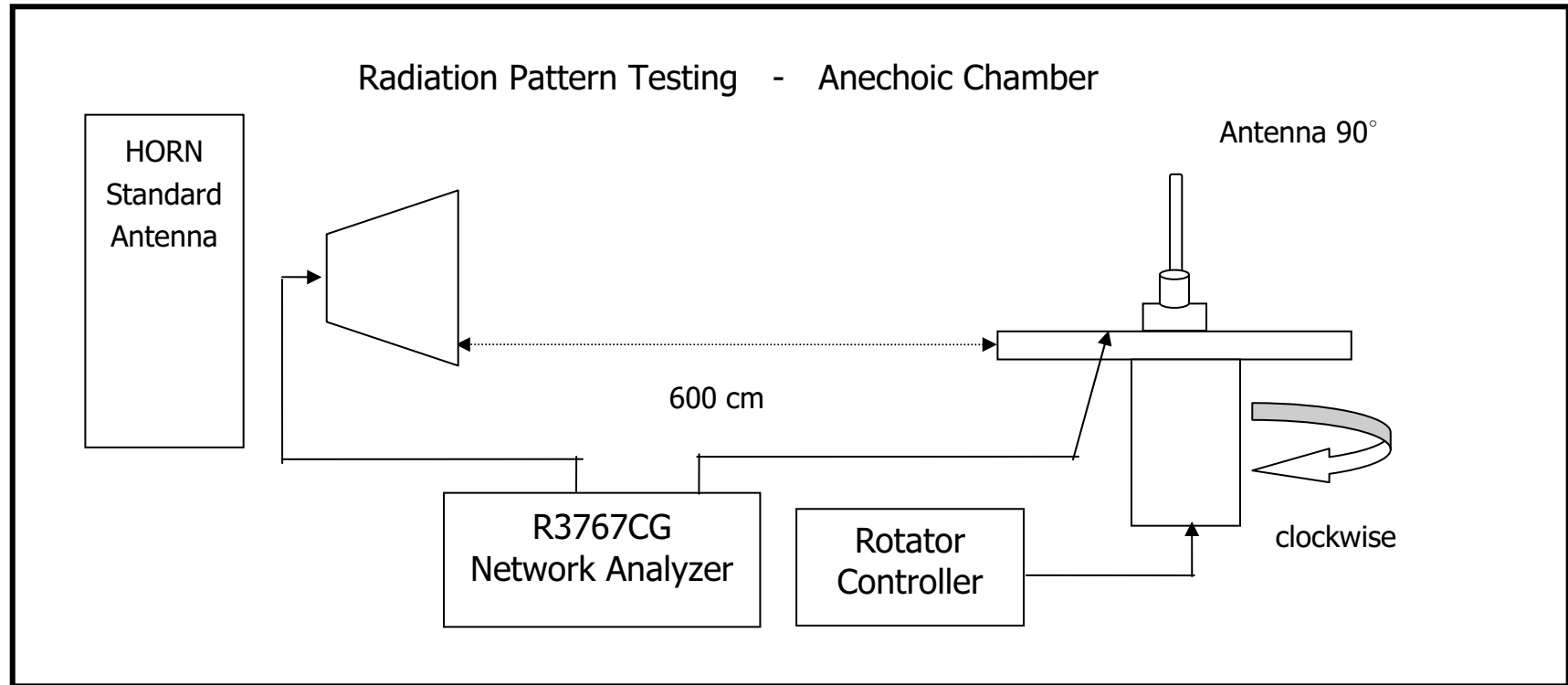
No.	Description	Specification	Qty	Notes
1	RUBBER TUBE	TPU 98A $\phi 9.2 \times L 75 \text{mm}$	1	
2	CONNECT	PC $\phi 9.35 \times L 20.1 \text{mm}$	1	
3	CONNECT	PC $\phi 9.35 \times L 24.6 \text{mm}$	1	
4	PING	BRASS $\phi 1.9 \times L 3.8 \text{mm}$	2	
5	MHF PLUG OD	$\phi 1.13$ BLACK	1	
6	CONNECT	I-PEX 20278-101R-13/20278-111R-13	1	

Item	Description	Date
①		
②		
③		
④		
⑤		

TOLERANCE					DATE	MATERIAL			
LEVER	A±	B±	C±		Mar/16/05				
0-6	0.05	0.10	0.20	QUANTITY		FINISH			
6-30	0.07	0.20	0.50	1 PCS/SET		TITLE: IP080			
30-100	0.10	0.30	0.80	SCALE	1:1	Part No. IP080APDI01+A			
100-300	0.20	0.50	1.20	UNIT	MM	APPROVAL	CHECKER	DRAWED	DWG No. 080-ACE-AIP01+A
300-	0.30	0.80	2.00					KEVIN	SHEET 1 OF 1 REV A

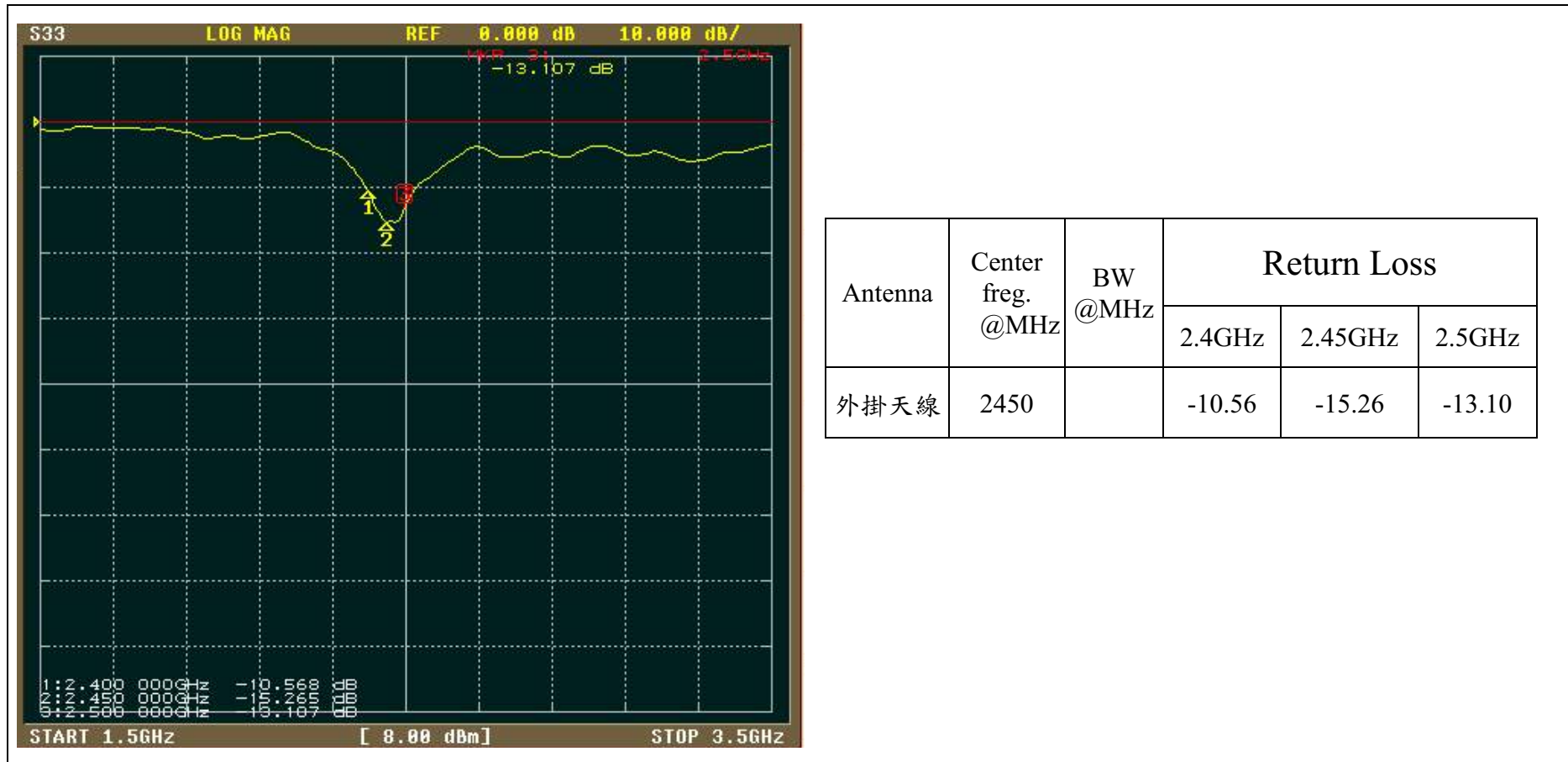
二、Antenna Testing Conditions:

Testing set up:



三、電氣特性 (Antenna Electricity Characteristics) :

1. Return Loss



	P/N : WG001APDI01A	Frequency Band : 2.4~2.5GHz	Date : 10 SEP 2007
--	--------------------	-----------------------------	--------------------

2. VSWR



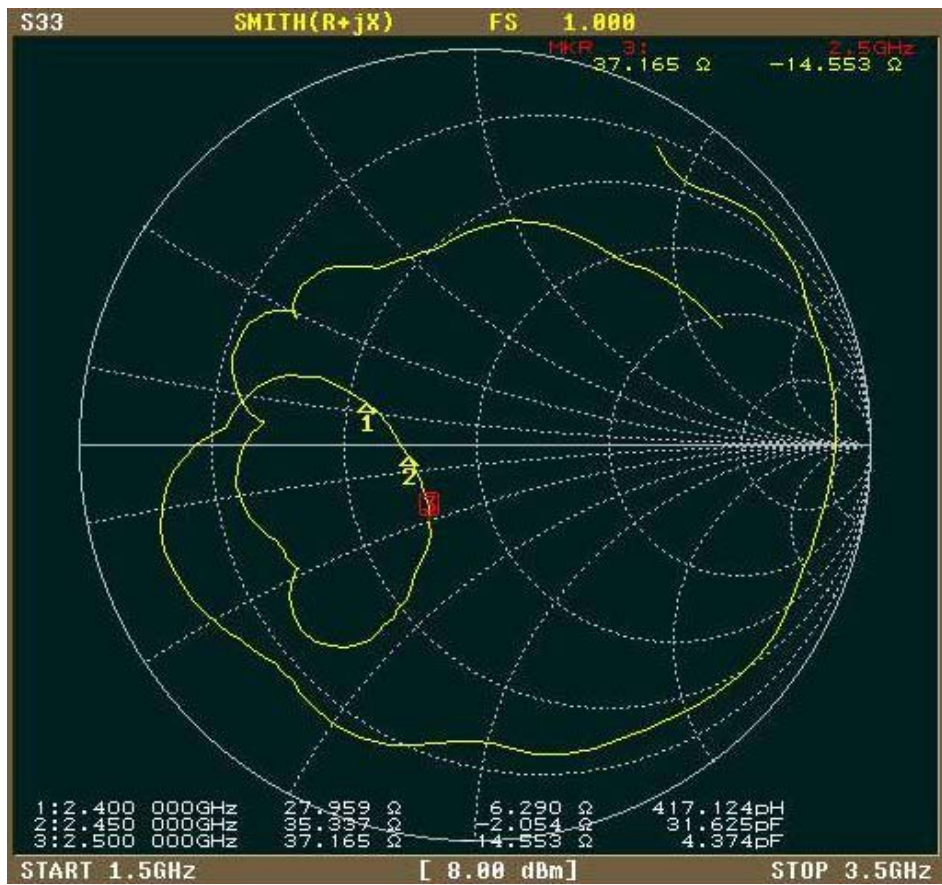
Antenna	Center freq. @MHz	BW @MHz	VSWR		
			2.4GHz	2.45GHz	2.5GHz
外掛天線	2450		1.83	1.41	1.57

P/N : WG001APDI01A

Frequency Band : 2.4~2.5GHz

Date : 10 SEP 2007

3. Smith Chart



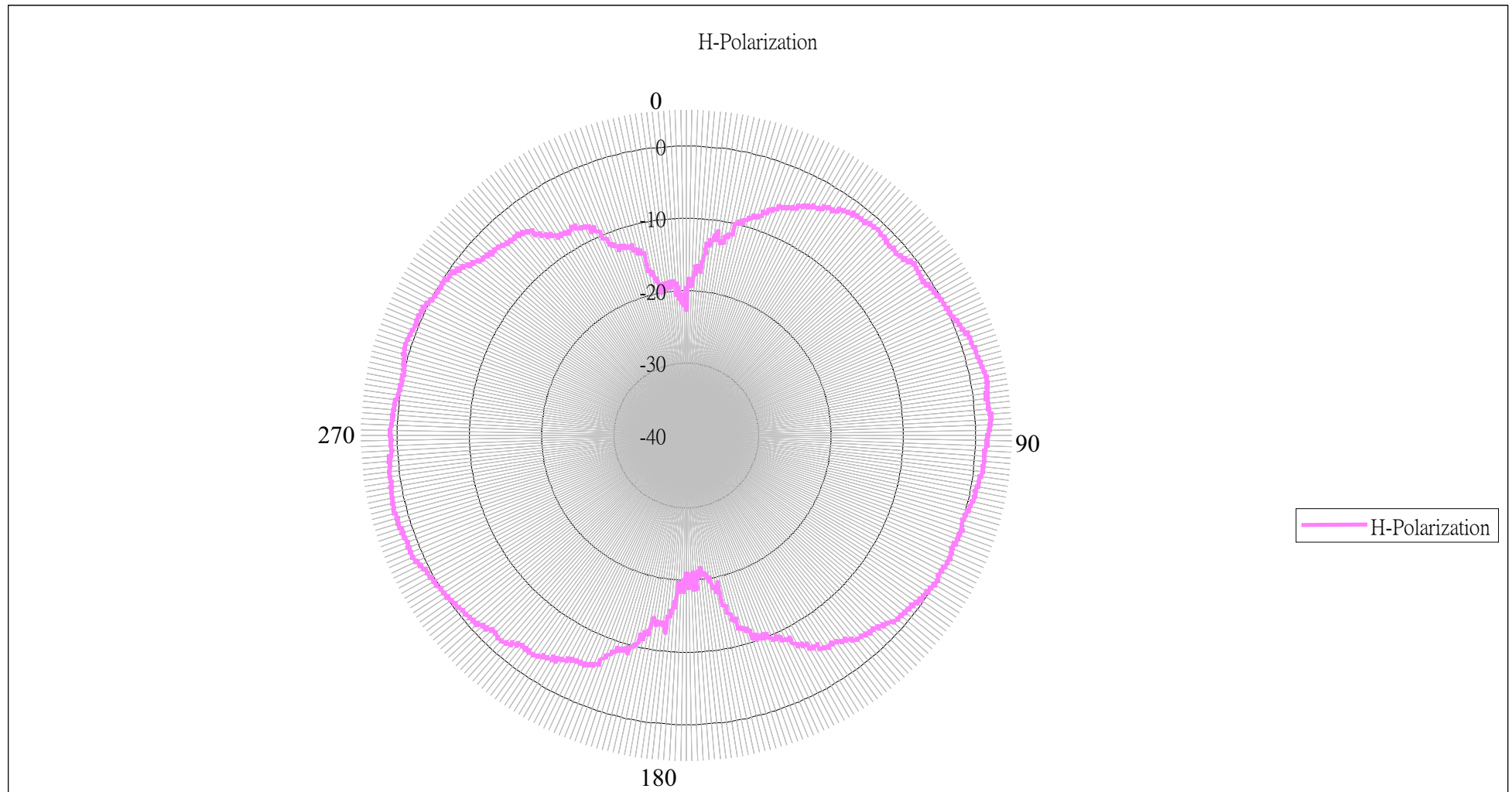
P/N : WG001APDI01A

Frequency Band : 2.4~2.5GHz

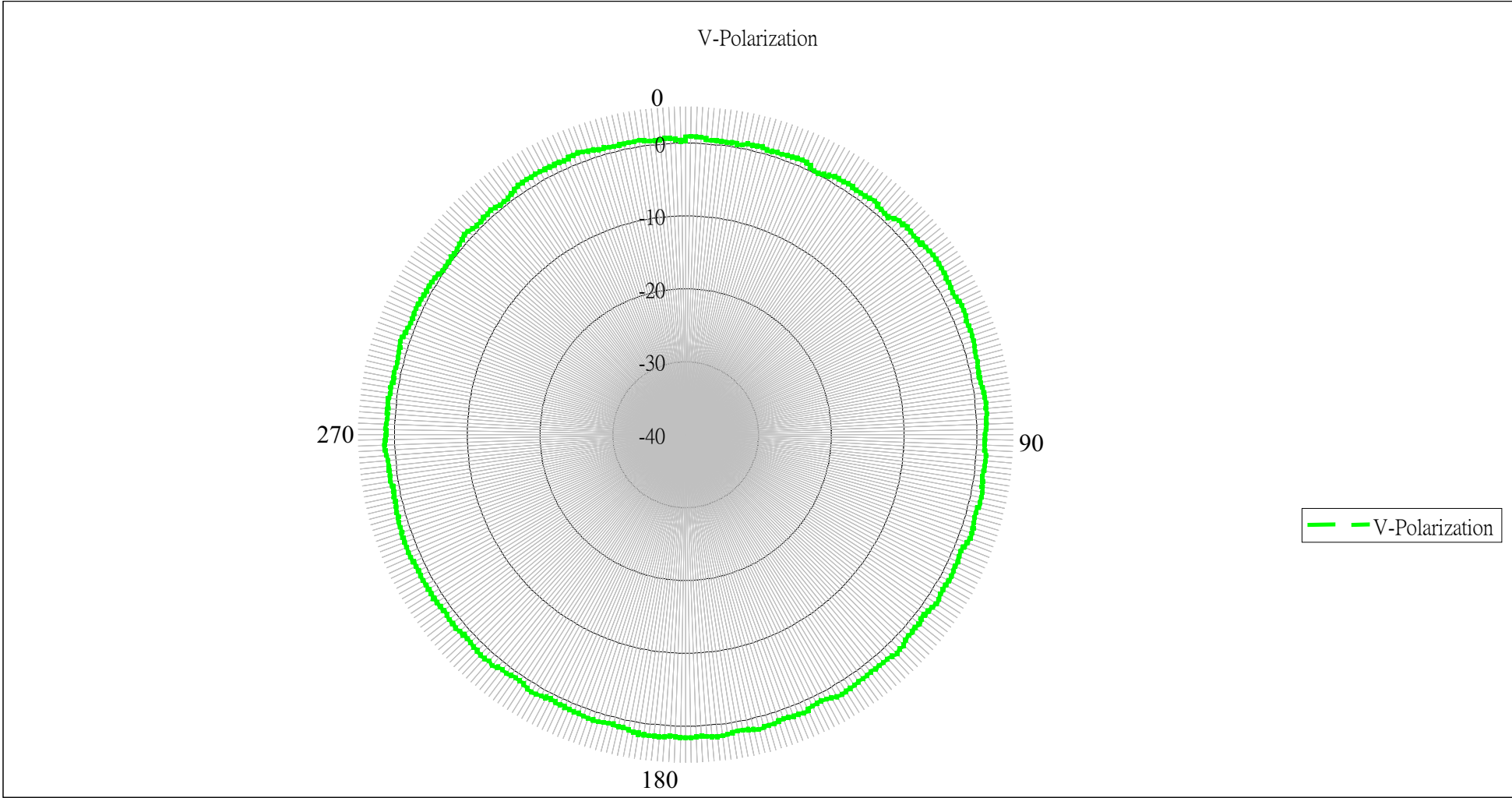
Date : 10 SEP 2007

四、Free Space 天線輻射場形：

1. Radiation Pattern of I Plane(Azimuth)- 2.45GHz(H)



2. Radiation Pattern of XY Plane(Azimuth)- 2.45GHz(V)



五、機械能力(Mechanical Capability)：

1. 拉力(Pull Force)

代號	測試部位	拉力值	持續時間
P1	膠管/固定具間	5 公斤	0 分 5 秒

2. 扭力(Torque)

代號	測試部位	扭力值	持續時間
T1	膠管/固定具間	3.5 公斤-公分	0 分 5 秒

六、SPECIFICATIONS:

● Electrical Properties

Frequency Range	: 2.4~2.5GHz
Impedance	: 50Ohms nominal
VSWR	: ≤ 2.0
Gain	: 2dBi
Standard Connector	: SMA Connector